



Downloading iAddress™ Software

The iAddress™ software installer can be accessed from our Customer Portal at:

<https://www.flagshipsoftware.com/fsweb/the-portal/>

Please create an account on the Customer Portal. There is a verification step, then you will receive an email confirming access to the Portal.

You will see this:

The Portal contains the complete iAddress™ Manual and other relevant information. In order to access the manual you must create a username and password.

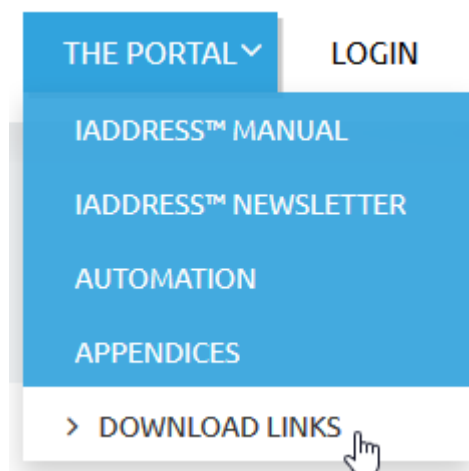
[CREATE ACCOUNT](#)

If you already have an account simply login:

[LOGIN](#)

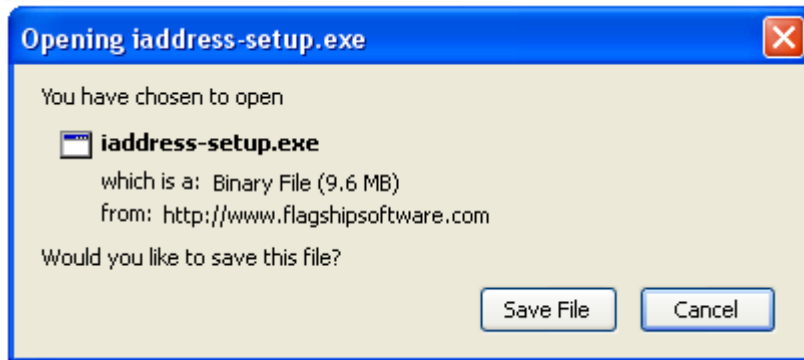
Approval can take from 2 min to 1 hour depending on when your account was created. You WILL receive a confirmation email from us. WAIT for the email before contacting us.

At the Portal, select:



iAddress™ Install

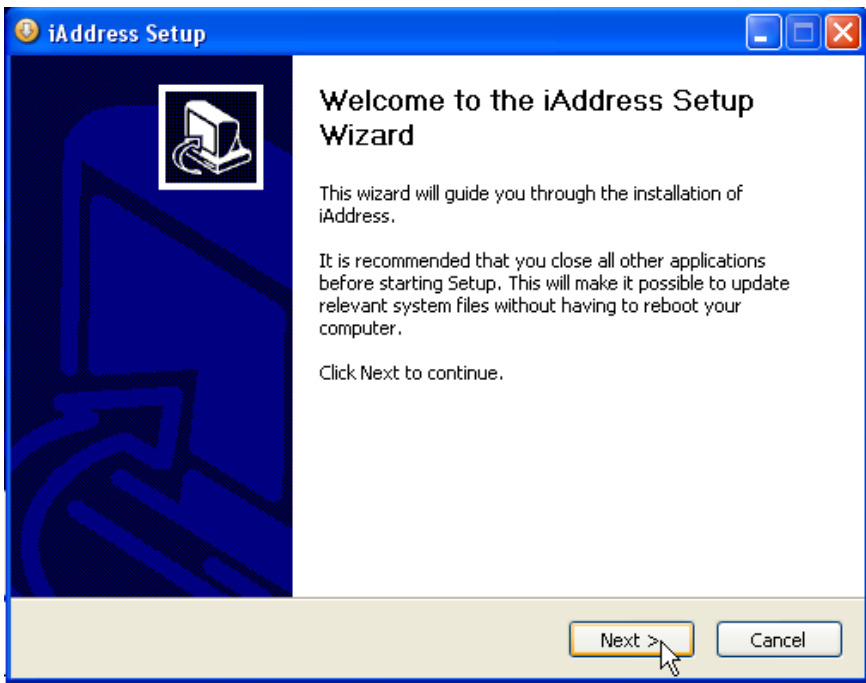
Download iAddress™



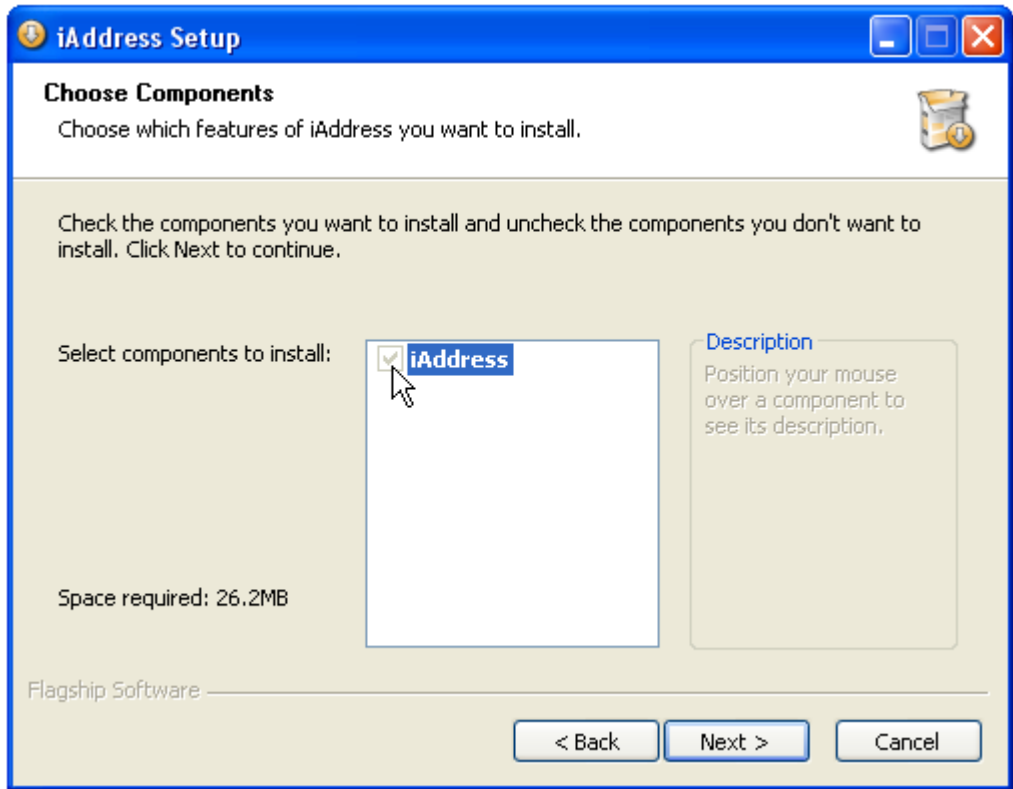
Select Run:

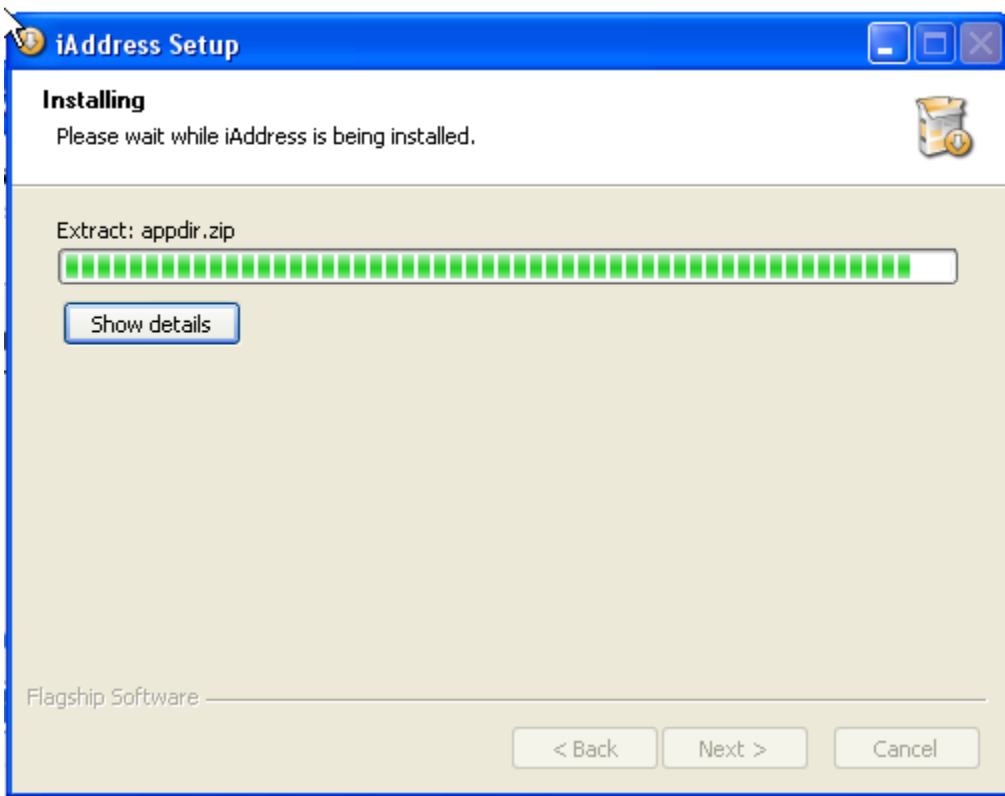
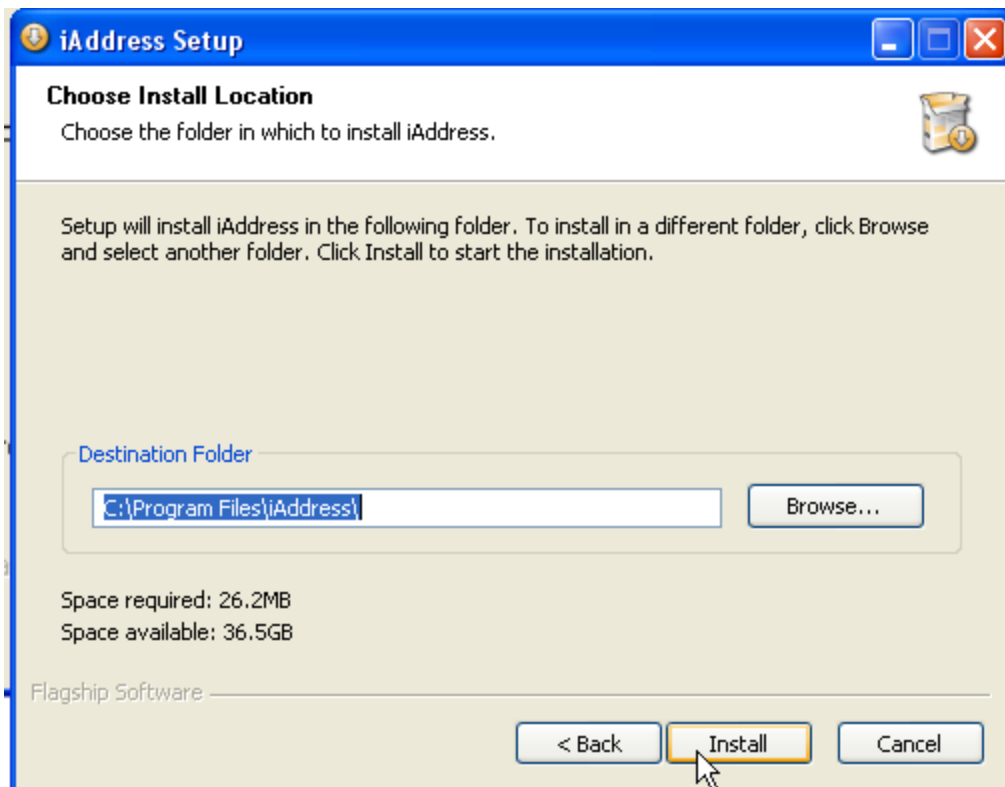


Follow the instructions to install the software. You will see a series of install screens:

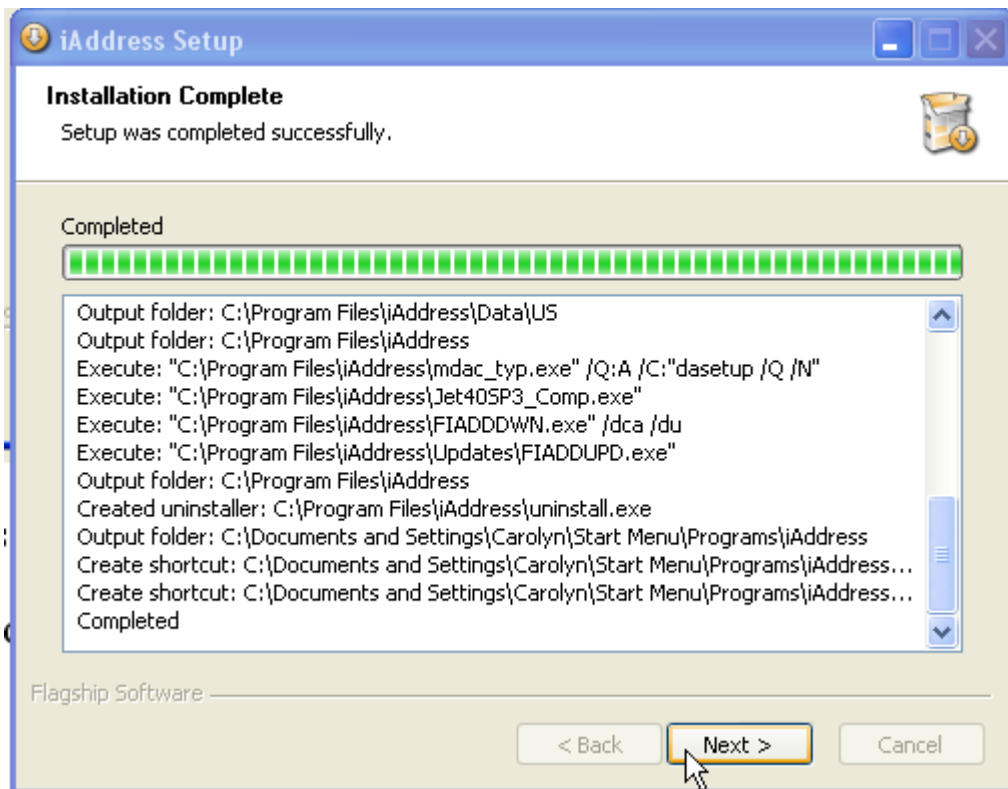


Select Next:

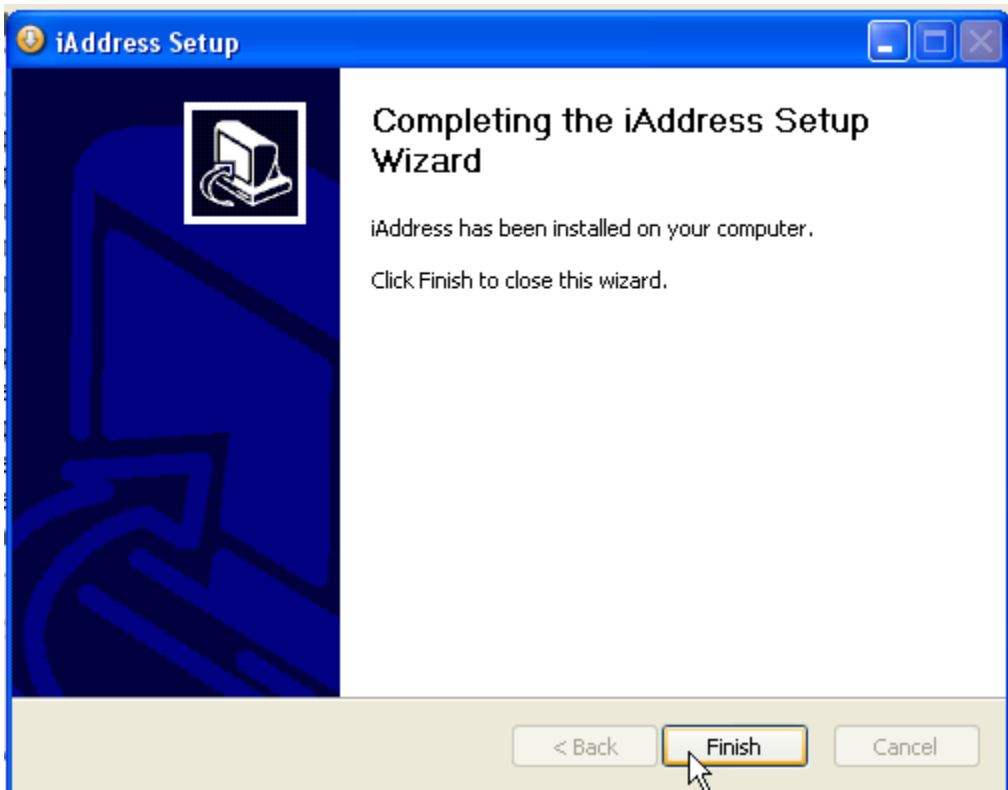




iAddress™ will notify you when the download is complete.

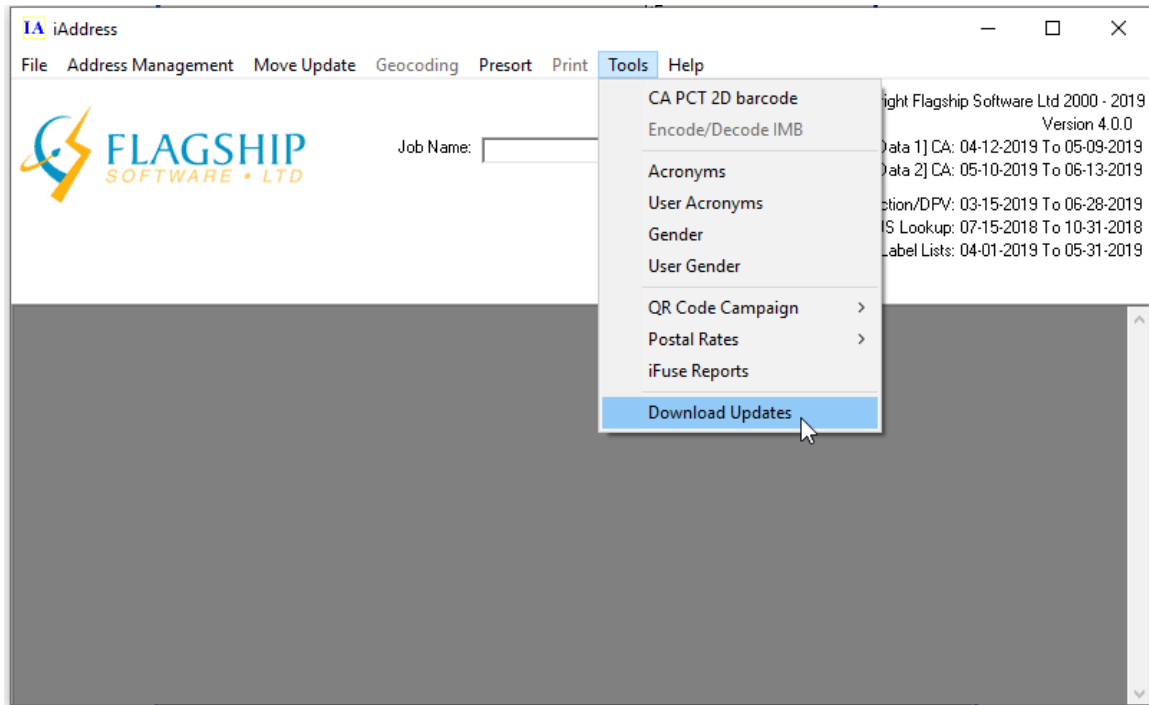


Select Finish:

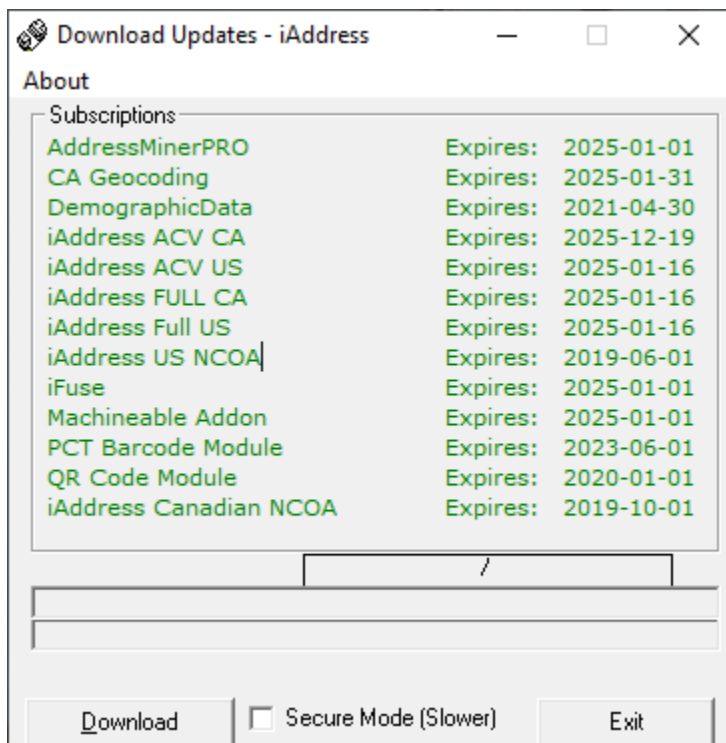


iAddress™ is a 3-user license, therefore each iAddress™ install will use one of the 3 serial numbers provided. After iAddress™ has been installed, please register the software as prompted by the installer with one of the serial numbers provided by Flagship Software.

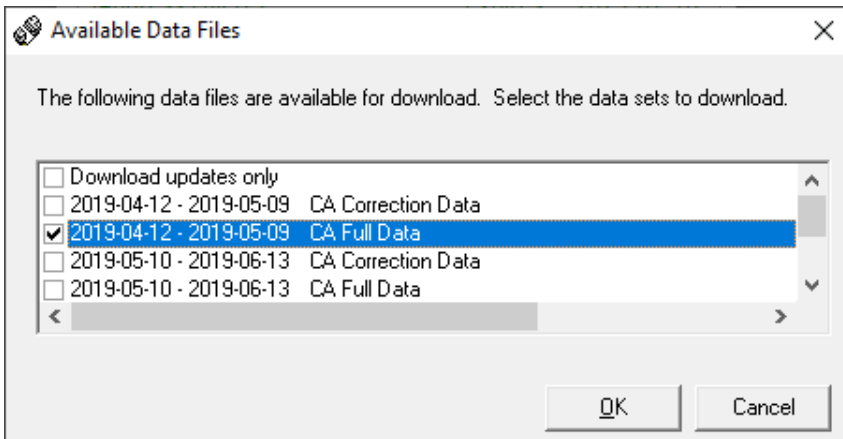
Each iAddress™ install will use one of the 3 serial numbers.
Next, please open up iAddress™ and download the data as follows:
Click on Tools, then Download Updates:



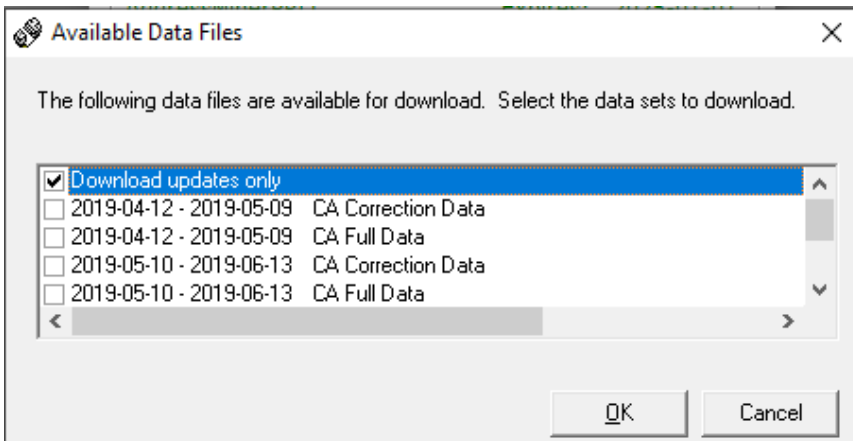
Select Download – you will see your current available subscription(s):



Choose the current available data (Canadian, US or both) and download:



You can also choose to download updates only:



Your software will restart after the download is complete.

If you require assistance, please contact our technical support team at 1-866-672-0007 xtn. 3 or support@flagshipsoftware.com

